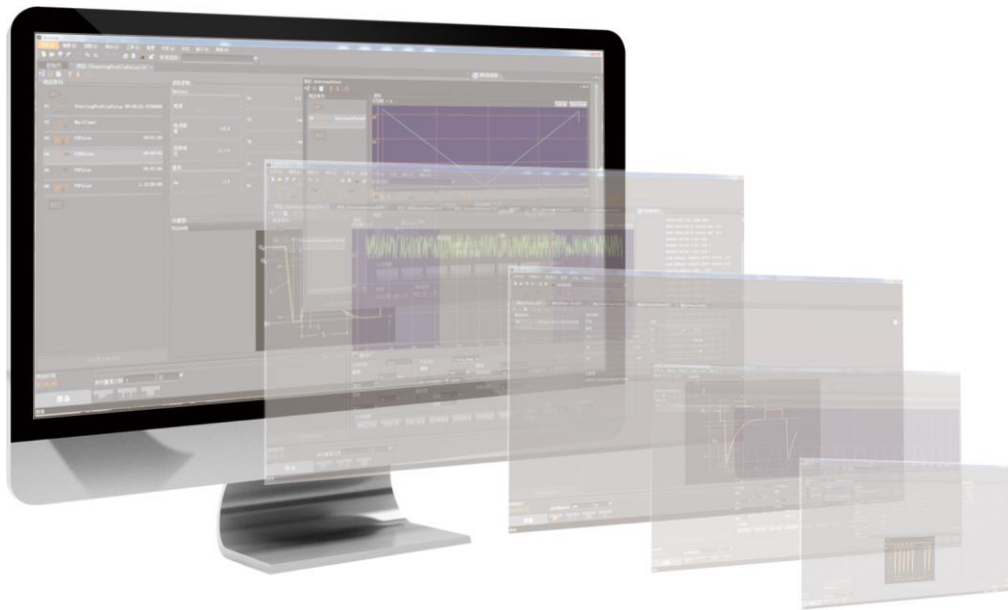


AutoLab Automotive Immunity Test Software



Introduction

AutoLab is the supporting software of the automotive electronic conducted immunity test system, and the software and hardware together constitute a complete test system, which can complete the transient conducted immunity and multi-channel power supply waveform simulation waveform test functions.

AutoLab, referencing relevant standards, provides predefined test parameters. It now offers over hundreds of test waveforms based on international and manufacturer standards, greatly facilitating user experience. Additionally, with automated test sequences, it enables remote one-click testing, making application operations more convenient.

Characteristics

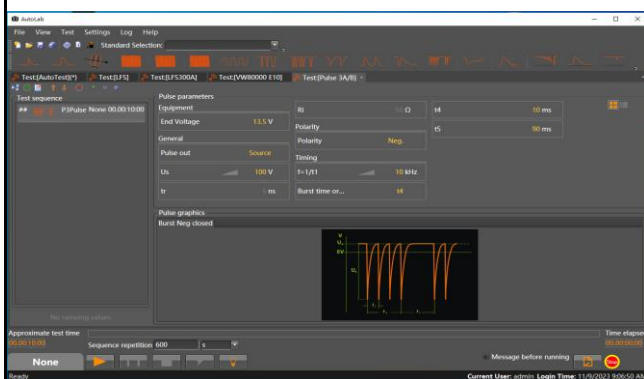
- > Compatible with Windows 7, Windows 8, Windows 10 and Windows 11 operating system;
- > Support the Ethernet interface;
- > Can control APS series, TIS series, LDS series, AWG series, RSG series, EVTS series equipment;
- > Support for most international standards and manufacturer standards and previous versions of the standards;
- > Support for the oscilloscope (.csv) Import and conduct the test data;
- > Powerful scheduling and test sequence, one-click remote control test;
- > Support single test / sequence test report export, support user-defined test report template;
- > Emergency stop function, one-click control, make the test more safe.

Application Areas

- > Custom programming of various standard waveform formats;
- > Custom programming of a wide range of standard waveforms;
- > Support parameter scheduling test, pilot project scheduling test, one-click testing, make testing easier;
- > Support the export of the test report, convenient for users to record real-time data;
- > Intuitive device configuration and management interface, the connection status at a glance;
- > The preservation and loading function of the waveform can manage the saved waveform;
- > Standard library, equipment support update.

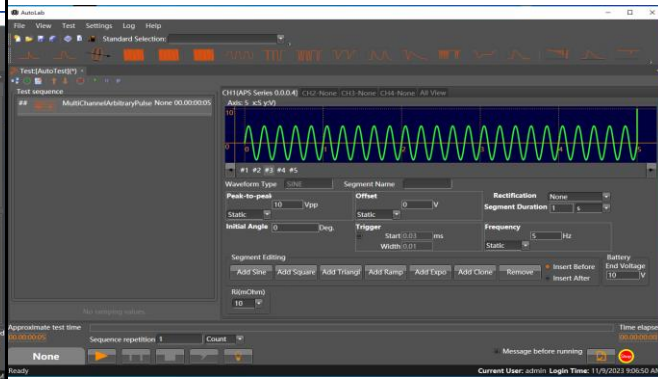
Detailed Introduction

Multi-window graphical UI:



Support to open multiple test editing Windows at the same time, each window is set independently, with the waveform legend, the meaning of parameters is clear at a glance.

Custom programming of a variety of standard waveforms:



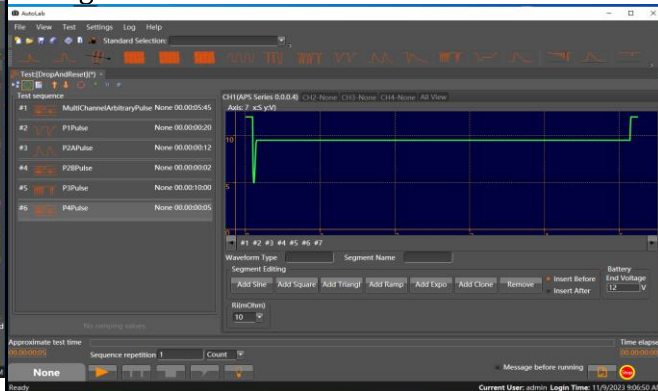
Support DC waveform, Harmonic, Sine wave, Sweep wave, Triangular wave, Square wave, Index wave, Frequency modulation / Amplitude modulation (FM/AM) sine wave standard waveforms, the above standard waveforms can be customized and edited into irregular waves and irregular arbitrary waves for testing, which fully explores the performance of the instrument and provides great scalability.

Multi-channel waveform arbitrary editing:



At present, the waveforms of automobile testing are becoming more and more complex. Although the single phenomenon simulation in the standard is still being tested, the whole vehicle or parts in the real environment is more valued. Ordinary waveform generator cannot meet these requirements, especially when multiple tests are required to add in one test, Autolab is a very good choice, Autolab can control the four-channel signal generator to stack four different voltage waveforms on one test article for testing.

Support parameter scheduling test, pilot project scheduling test, one-click testing, make testing easier:



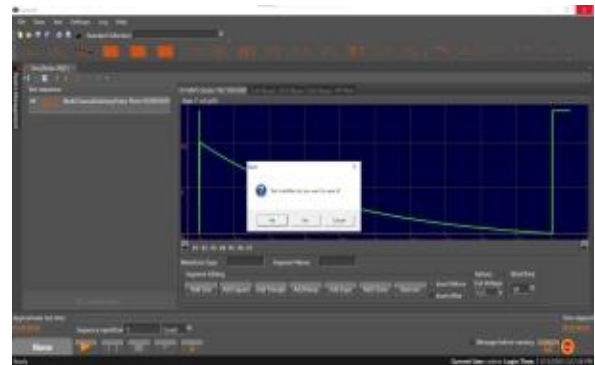
Multiple test step sequences and multiple test items can be added to a test, which is convenient for users to test a test sample, realize one-click testing, and test conveniently. For test parameters, Autolab also supports scheduling and setting multiple parameters to achieve iterative testing of parameters and avoid frequent parameter setting.

- Intuitive device configuration and management interface, the connection status at a glance:



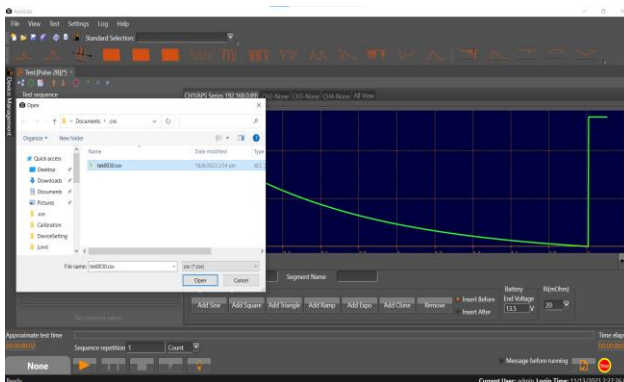
All the equipment information is displayed in the separate configuration interface, and the connection status is clear at a glance. After the configuration, there is no need to select the equipment for each test, and the system will complete the test according to the configured equipment information.

- The preservation and loading function of the waveform can manage the saved waveform:



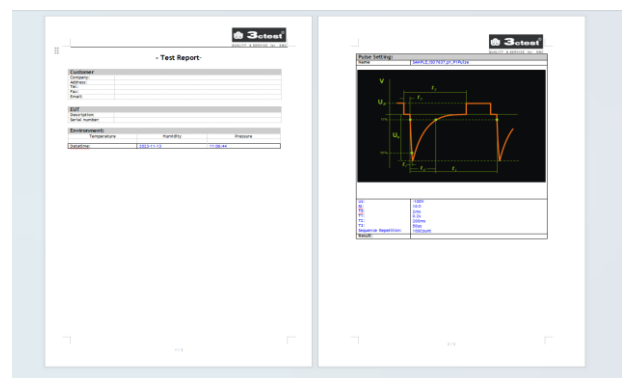
Autolab Standard libraries or custom programmed waveforms can be saved, and these saved files can also be loaded; Autolab, the user can customize the specified folder name and save the file name for management and testing again.

- Oscilloscope format (.CSV) data for import and testing:



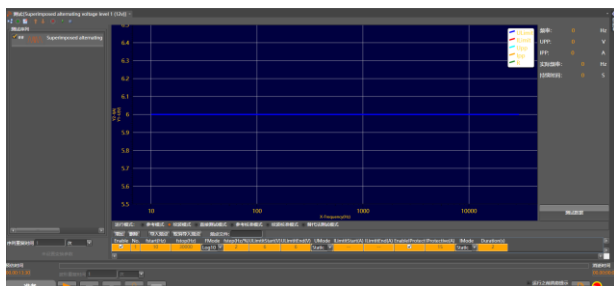
Supports reading the oscilloscope export format (.csv) file, users can also establish the waveform data file in Excel, after the system read (.csv) file, the corresponding waveform diagram is displayed on the interface, and the user can set the parameters and run the test.

- Supports the export of test reports for users to record real-time data:



The default report header information can be set or the user can edit the test report template according to their actual business needs and the operation instructions and examples. After the test, the report with experimental data is automatically generated. And the user can also generate the report at any time to record some information during the test.

■ Closed-loop related standard testing is supported:



Supports a variety of test modes: Direct test mode, Calibration mode, Alternative method testing, Reference closed-loop mode and Ripple closed-loop mode.

Support parameter custom format (.csv) file: Users can also create waveform data files in Excel, and after importing (.csv) files, the corresponding waveform schematic diagram will be displayed on the interface, and users can set the test mode and run the test.

It supports real-time information display of monitoring data for easy viewing, and supports custom saving of test data.

List of Supported Standard Library

> Asea EP455 2003.02	> DongFeng QDH-YA07-01-2019
> BMW BMW N 600 13.0 T1	> Dongfeng QDH-YA07-01A-2022
> BMW BMW N 600 13.0 T2	> ECE R10 Rev4, 2012-04
> BMW GS 95002	> ECE R10 Rev 5, 2014.10
> BMW GS 95002 2004.10	> ECE/R10.6 Nov. 2019
> BMW GS 95002 2010.06	> FIAT 7-Z0441 2008.04
> BMW GS 95003-2	> FIAT 7-Z0444 2008.04
> BMW GS 95003-2 2007.03	> FIAT 9.9011 Rev. 13, 2007.03
> BMW GS 95003-2 2010.01	> FIAT 9.90110
> BMW GS 95024-2-1 2010	> Ford EMC-CS-2009 rev1
> BMW GS 95024-2 2020	> Ford EMC-CS-2009 rev1 CI 220 G1, CI 220 G2
> BYD QBYDQ-A1901.707.2	> Ford ES-XW7T-1A278-AB 1999.04
> BYD Q_BYD_A1901.706.3-2020	> Ford ES-XW7T-1A278-AB 1999.04 CI 240 Load Dump
> Case New Holland	> Ford ES-XW7T-1A278-AC OCT 2003
> CHANGAN VS-00.00-T-11019-A1-2015	> Ford ES-XW7T-1A278-AC Oct 2003 CI 220G
> CHANGAN VS-00.34-L-10002	> Ford ES-W7T-1A278-AB (Update 2006.06)
> CHANGAN VS-00.34-L-10002 2020	(2003.10)
> CHANGAN VS-00.34-L-10002 2024	> Ford FMC 1278
> CHANGAN VS-00.35-L-10008 2018(V2)	> Ford FMC 1278 2015-07
> CHANGAN VS-00.35-L-10008 2018-12-25(V3)	> Ford FMC 1278 2016
> CHERY QSQR E8-4-2019	> FOTON QFPT2800001 2011
> China Motor Company ES-X82010 Rev. O, 2005.10	> GAC QJGAC 1523_029
> CNH ENS0310 03-09	> GBT 21437.2 2008
> CNH ENS0310 Rev. G, 2010.01	> GBT 21437.2 2021
> Daimler Chrysler CS-11809 2009.05	> GBT 21437.3 2012
> Daimler Chrysler CS-11979 2010.07	> GBT 21437.3 2021
> Daimler Chrysler DC-10614 2004-01 A	> GBT 28046.2-2011
> Daimler Chrysler DC-10614 Rev. B, 2005.03	> GBT 28046.2 2019
> Daimler Chrysler DC-10615 2003-05 A	> GEELY J7110982A 2016
> Daimler Chrysler DC-10615 2004-08 B	> GEELY J7111029B 2017
> Daimler Chrysler DC-10615 Rev. D, 2007.05	> GEELY J7110779C 2017
> Daimler Chrysler DC-11224 2007-05	> GEELY J7111029C 2020
> Daimler Chrysler PF-10540 2001-12	> GEELY CEVT 8888621495-2 2018
> Daimler Chrysler PF-10540 Rev. A, 2003.10	> GEELY Q-JLY J7111029B
> Daimler Chrysler PF-10541 Rev. A, 2003.12	> GEELY Q-JLY J7110779D
> Daimler Chrysler PF-9326 Change C 1999.12	> GEELY QJLY J7111029D 2022
> DongFeng EQCS-1204-2017	> GEELY Q-JLY J7111974A-2024
> DongFeng QDFXK 323-2016	> GEELY Q-JLY-J7110779B 2014
> DongFeng Q LQB C-208-2019	

List of Supported Standard Library

> GEELY J7111029E 2024	> ISO 7637-2 2011
> General Motors GM9105P 1996.11	> ISO 7637-2 2016.11
> General Motors GM9117P 1993.05	> ISO 7637-2 20
> General Motors GM9123P 1997.01	> ISO 7637-3 2007.07
> General Motors GMW 3097 2004.02	> ISO 7637-3 2016
> General Motors GMW 3097 2006.07	> ISO 7637-4 2017
> General Motors GMW 3097 (Rev. 6, 2012.04)	> ISO 7637-4 2019
> General Motors GMW 3097 2015.06	> ISO 7637-4 2020
> General Motors GMW3097 Dec 2022	> ISO 21780 2019
> General Motors GMW 3100 2000.02	> ISO 21780 2020
> General Motors GMW 3172 2001.12	> ISO/FDIS 21780 2020 E
> General Motors GMW 3172 2008.08	> ISO/DIS 11452-8 2015-06
> General Motors GMW 3172 2010.07	>ISO 14708-3
> General Motors GMW 3172 2012 9.2.18	> IVECO 16-2101 2006.4
> General Motors GMW 3172 2014.10	> JA 3700-93C-1
> General Motors GMW 3172 2015.06	> Jaguar / Land Rover JLR-EMC-CS Version 1.0, Am 4 2015-02
> General Motors GMW 3172 2018	> JA 3700-MH-3 2021
> General Motors GMW 3172 2022-11	> JA 3700-MH-4 2021
> General Motors BT-SGMWJ 08244.9-2018	> JASO D001 A-2, B-2, D-2
> GOST 28751-90 1990	> JASO D001 1994 A-1, B-1, D-1, E
> GOST 33991-2016	> JASO D014-2 2014.03
> GreatWall GWT A D01-01 2020-09	> JIDU QJIDU 0019-2022
> GreatWall GWT A D05-02	> John Deere JDQ 53.3 2005.10
> GreatWall	> KARMA C1800STA0131 Rev2
> HARMAN	> Mazda MES PW 67600
>HeZhong QTHZ E8-4	> Mazda MES PW 67602 D
> Hyundai Kia ES-95400-10 Rev. A, 2003.10	> Mazda MES PW 67602 Nov.2015
> Hyundai Kia ES 96200-00 REV K 2011-11 P5b	> Mazda MES PW 67602 2019
> ISO 16750-2 2000.11	> Mercedes LV 123
> ISO 16750-2 2006	> Mercedes MBN 11123 2019-10
> ISO 16750-2 2010	> Mercedes MBN 10284-2 2002
> ISO 16750-2 2012	> Mercedes MBN 10284-2 2008
> ISO 16750-2 2023	> Mercedes MBN 10284-2 2011
> ISO 21498-2 2021	> Mercedes MBN 10284-4 2011
> ISO 21498-2 2024	> Mercedes MBN 10615 2009.09
> ISO 21848 2005	> Mercedes MBN 22100-2 1999
> ISO 7637-1 1990-06	> Mercedes MBN LV 124-1 2011.03
> ISO 7627-2 1990	> Mercedes MBN LV 124-1 2013.03
> ISO 7637-2 1999.02	> Mercedes MBN LV 148 2013-11
> ISO 7637-2 2004	

List of Supported Standard Library	
<ul style="list-style-type: none"> > MFA2 PACK EMC TestSpec V1.0 > Mitsubishi ES-X82010 Rev. O, 2001.12 > Mitsubishi ES-X82114 2009.03 > Mitsubishi ES-X82115 2009.03 > NEXTEV Voltage Specification Ver1.0 2015 > NEXTEV NIO-TP.20.007 > NEXTEV E10 E13 > Nissan 28400 NDS03 [3] 2005.08 > Nissan 28400 NDS02 [3] 1999.07 > Nissan 28400 NDS 03 B-2 > Nissan 28400 NDS 03_2A 1997-01 A-1, A-2, B-1 > Nissan 28400 NDS 07 C300 > Nissan 28400 NDS 07 C50 > Nissan 28400 NDS 07 C8 > Nissan 28401 NDS02 [4] 2008.08 > Nissan 28401 NDS 02 [5] 2010 > Nissan 28401 NDS 02 [6] 2013-01 > Nissan 28401 NDS 02 [8] 2016-07 > Nissan EMC1_RNDS-C-00517_4 > Nokia Proprietary > NIO TP.20.003-2019(Version2.1) > Peugeot B21 7090 Nov 1993 > Peugeot B21 7090 1998.01 > Peugeot B21 7110 2001 > Peugeot B21 7110 2005 > Peugeot B21 7110 2008.07 > Peugeot B21 7110 F Apr. 2019 > Peugeot B21 7110 Step 2015 > PSA B21 7110 Rev. D 2012-10 > Porsche EMV Lastenheft 2005.04 P5 > QCT 727 2007 > QDH-YA07-01-2019 > Q/DK TE 4601 2019 > Renault 36-00-400 1998 > Renault 36-00-808 2004 > Renault 36-00-808--K 2009.03 > Renault 36-00-808--L 2010.12 > Renault 36-00-808--M 2012.07 	<ul style="list-style-type: none"> > Renault 36-00-808--N Mar. 2016 > SAE J1113-2 1996 > SAE J1113-11 1995.06 > SAE J1113-11 2000.03 > SAE J1113-11 Rev.5, 2007.06 > SAE J1113-11 Dec 2018 > SAE J1113-12 2006.08 > SAE J1113-12 1994.12 > SAE J1113-22 2003.11 > SAE J1455 for trucks 1994-07 > SAE J1113-11 2012.01 > SAE J1455 2006.06 P5 > SAE J1455 2017-03 > SAE J2139 2005.09 > SAE J2628 2007.07 > Ssangyong SES E 922 2008.05 > SCANIA TB1400 P5 > SCANIA TB1700 P5 > SCANIA TB1901 P5 > SMTc 3800001 2014 > SMTc 3800001 2017 > SMTc 3800006-2020 > TianJi QDK TE 4601-2019 > Toyota TSC0502G 2016 > Toyota TSC0506G 2019 > Toyota TSC7001G Rev. 7, 2009.01 > Toyota TSC7034G 2010.09 P5 > Toyota TSC7034G 2019 > TS_TG1 > UN ECE TSC7034G 2019 > VDA 320 2015.01 > VG 96916-5 2013.08 > VG 96916-5 2013.08 > VM Motor QWM J073013A-2019 > Volkswagen TL 82066 2001.09 > Volkswagen TL 82066 2004.10 > Volkswagen TL 82066 2006.11

List of Supported Standard Library

> Volkswagen	TL 82366 1994.03	
> Volkswagen	VW 80000 2009.10	
> Volkswagen	VW 80000 2013 E15	
> Volkswagen	VW 80000 2013.06	
> Volkswagen	VW 80000 2017	
> Volkswagen	VW 80101 2006.10	
> Volkswagen	VW 80101 2009.03	
> Volkswagen	VW80300 Oct 2016	
> Volkswagen	VW80300 2021	
> Volkswagen	VW TL 81000 2018	
> Volkswagen	VW 80000 2021-01	
> Volkswagen	OBDFunktionsprüfung+V8	
> Volvo STD 515-0003 Ver.4	2009.10	P5b
> Volvo STD 515-0003	Feb. 2017	
> XIAOMI	QMAT5502 2023	
> XIAOMI	QMAT550x-2024	
> YAMAHA		
> Empty high-pressure arbitrary pulse		
> Pulse 2c		

List of support equipment	
<p>■ APG Series</p> <p>APG 40C40</p> <p>APG 40C50</p> <p>APG 40C60</p> <p>APG 60C40</p> <p>APG 60C50</p> <p>APG 60C60</p> <p>APG 60C80</p> <p>APG 60C100</p> <p>■ APS Series</p> <p>APS 40C05</p> <p>APS 40C05D</p> <p>APS 40C10</p> <p>APS 40C15</p> <p>APS 40C15D</p> <p>APS 40C20</p> <p>APS 40C20D</p> <p>APS 40C30</p> <p>APS 40C30D</p> <p>APS 40C30SD</p> <p>APS xxDRS</p> <p>APS 40E05D</p> <p>APS 40E10D</p> <p>APS 40E15D</p> <p>APS 40E20D</p> <p>APS 40E30D</p> <p>APS 40E50D</p> <p>APS 40E100D</p> <p>APS 40F05D</p> <p>APS 40F10D</p> <p>APS 40F15D</p> <p>APS 40F20D</p> <p>APS 40F30D</p> <p>APS 40F50D</p> <p>APS 40F100D</p> <p>APS 40G05D</p> <p>APS 40G10D</p> <p>APS 60H30D</p> <p>APS 60H10D</p>	<p>APS 40G15D</p> <p>APS 40G20D</p> <p>APS 40G30D</p> <p>APS 40G50D</p> <p>APS 40G100D</p> <p>APS 60C10</p> <p>APS 60C20</p> <p>APS 60C30</p> <p>APS 60C60D</p> <p>APS 60C100D</p> <p>APS 60E05D</p> <p>APS 60E10D</p> <p>APS 60E15D</p> <p>APS 60E20D</p> <p>APS 60E30D</p> <p>APS 60E50D</p> <p>APS 60E100D</p> <p>APS 60F05D</p> <p>APS 60F10D</p> <p>APS 60F15D</p> <p>APS 60F20D</p> <p>APS 60F30D</p> <p>APS 60F50D</p> <p>APS 60F60D</p> <p>APS 60F100D</p> <p>APS 60G05D</p> <p>APS 60G50DR</p> <p>APS 60G10D</p> <p>APS 60G15D</p> <p>APS 60G20D</p> <p>APS 60G30D</p> <p>APS 60G50D</p> <p>APS 60G100D</p> <p>APS 60H05D</p> <p>APS 60H15D</p> <p>APS 60H50D</p> <p>APS 60H100D</p> <p>APS 80C100D</p> <p>APS 80D100DR</p>

List of support equipment	
APS 80E05D	■ LDS Series
APS 80E10D	LDS 200
APS 80E15D	LDS 200N100
APS 80E20D	LDS 200N30D
APS 80E30D	LDS 200N50D
APS 80E50D	LDS 200N75D
APS 80E100D	LDS 200N100D
APS 80F05D	LDS 200N200D
APS 80F10D	LDS 300N30D
APS 80F15D	LDS 300N50D
APS 80F20D	LDS 300N75D
APS 80F30D	LDS 300N100D
APS 80F50D	LDS 500P
APS 80F100D	■ LFS Series
APS 80G05D	LFS 300A
APS 80G10D	LFS 300B
APS 80G15D	LFS 300C
APS 80G20D	LFS 800
APS 80G30D	■ PFS Series
APS 80G50D	PFS 6030A
APS 80G50DR	PFS 60xxA
APS 80G100D	PFS 60xxA1
APS 80H05D	PFS 10060D
APS 80H10D	PFS 60100A2
APS 80H15D	PFS 60200A2
APS 80H20D	■ PAWG Series
APS 80H30D	PAWG 100D
APS 80H50D	PAWG 100F
APS 80H100D	AWG 100D
APS 80I05D	AWG 100F
APS 80I10D	■ RC Series
APS 80I15D	RC 150C100
APS 80I20D	■ TIS Series
APS 80I30D	TIS 500P
APS 80I50D	TIS 700
APS 80I100D	TIS 700S
■ INR Series	TIS 700-60
INR 60	TIS 700-100

List of support equipment

TIS 700-200

TIS 700-100S

TIS 100C06

■ VOS Series

VOS 16C03

■ RSG Series

RSG xxCxx

■ EVTS Series

EVTS 150C10

EVTS 150C30

EVTS 150C06

LDV 21498

PSB 11500-60

■ EVPG Series

EVPG 20

■ EVDG Series

EVDG 20

■ HTS Series

HTS 150C30

■ AN Series

AN 150C30

■ HNS Series

HNS 200



SUZHOU 3CTEST ELECTRONIC CO., LTD.

Add.: No. 99 E'meishan Road, SND, Suzhou, Jiangsu Province, China

Tel: +86 (0)512 6807 7192 Fax: +86-512-68079795

Sales Email: globalsales@3ctest.cn Service Email: service@3ctest.cn

www.3c-test.com