



Ripple Signal Generator

RSG 80C50

- ISO/TS 7637-4:2020
- ISO 21498:2024
- VW 80300:2021
- GJB 151B
- ISO 11452.8

Features

- > 5.7-inch color touch screen, front panel operation
- > Meets the pulse B requirements of ISO/TS 7637-4:2020 standard
- > Overvoltage and overcurrent protection
- > External coupling transformer
- > Multiple operating modes to meet testing requirements
- > Low frequency amplifier 10Hz-300 kHz, 160Vpp, 100App
- > Ethernet and RJ45 interfaces, used for PC remote control and printing test reports
- > Output voltage accuracy ± 0.2 V

Introduction

The RSG 80C50 ripple signal generator complies with ISO/TS 7637-4: 2020 ISO 21498: 2024 and VW 80300: 2021 standards, meeting the transient conduction measurement standard pulse B requirements for new energy vehicle electric drives and high-voltage components. Simultaneously compatible with GJB 151B, ISO 11452.8 and other standard low-frequency immunity tests. This device adopts our company's third-generation control platform design, with intelligent control and simple operation. Setting relevant parameters on the Autolab software interface allows for one click operation testing.

Application Areas



Technical Parameter

Frequency range	10Hz ~ 300kHz
Stepped frequency	0.01Hz
Maximum open circuit output voltage	160 Vpp
Ripple dwell time	2 s~999 s, resolution 0.1 s
Maximum output current	100 App
Voltage accuracy	±0.2 V

General parameters

Supply voltage	AC 380 V, Soil 10%, 50 Hz/60 Hz
Trigger Mode	Automatic trigger, manual trigger, external trigger
User storage space	infinite
failure detection	When it fails, the front panel LCD displays and interrupts the instrument's operation
Instrument working status indication	LED indicator LCD display
Instrument weight	156 kg
Chassis size	22U
Instrument grounding connection method	Use a flat grounding wire
Ambient temperature	15 °C - 35 °C
Humidity range	45% - 75%
Compressed air	86 kPa -106 kPa
Maximum power consumption	6 kW

Standard accessories

Instruction manual, factory report, test line, power cord, fuse

Optional accessories

Coupling transformer
TPT-7637-4C100B



Maximum Unsaturated Voltage (Vpp) 160 Vpp
Maximum coupling current (App) 100 App
Maximum EUT current (A) DC 100 A
Maximum EUT voltage (V) DC 1000 V
Turn ratio 1:1
Frequency range 10 Hz~300 kHz

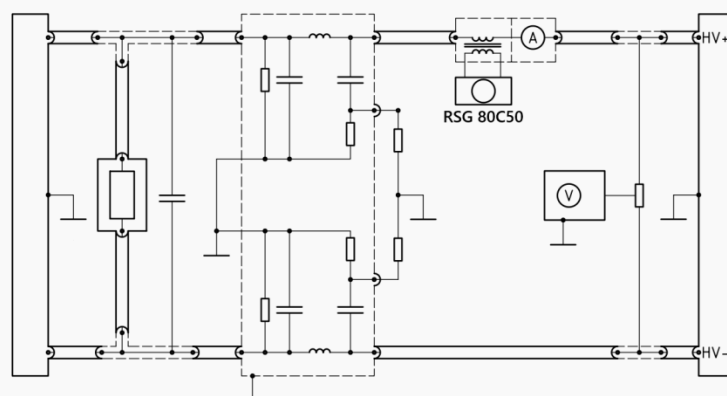
Immunity testing software
CoreLab



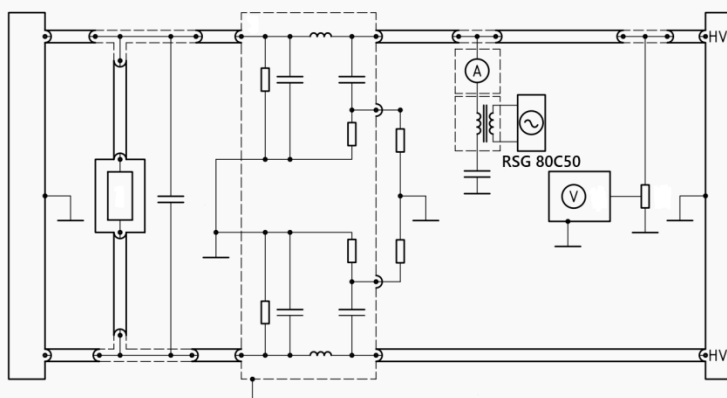
>Supports Windows 7 and Windows 10.
>Standard testing library, users can customize testing programs.
>Users can customize any waveform (outside of the standard library).
>It can automatically/manually identify the connected Autolab testing equipment and perform automatic configuration.
>The template based reporting feature can help users generate test reports flexibly.

Standard Connection Diagram

ISO 7637-4, B-wave connection diagram line to line



ISO 7637-4, B-wave connection diagram HV+line to ground



SUZHOU3CTEST ELECTRONIC CO., LTD

Address: No. 99 E'meishan Road, SND, Suzhou, Jiangsu Province, China

Sales Email: globalsales@3ctest.cn Service Email: service@3ctest.cn

Tel: + 86 - 512 - 68077192 Web: www.3c-test.com

